

MORIMATSU GROUP GLOBAL OFFICES

EUROPE

Stockholm Office, Sweden
Danvik Center 28, 131 30 Nacka, Sweden
E-mail: info@pharmadule.com
Tel.: +46 (8) 587 42 000

Milan Office, Italy
Palazzo Verrocchio Piano 5
Centro Direzionale Milane Due
Via Fratelli Cervi, 20054 Segrate (MI), Italy
E-mail: info@pharmadule.com

AMERICA AND LATIN AMERICA

New Jersey Office, U.S.
101 Morgan Lane, Suite 303
Plainsboro, NJ 08536, U.S.
E-mail: info@pharmadule.com
Tel.: +1 (908) 722 6845

Houston Office, U.S.
11490 Westheimer Road, Ste800
Houston, Texas 77077, U.S.
E-mail: info@pharmadule.com
Tel.: +1 (281) 597 8515

Mexico Office, Mexico
Mezquite De Sotelo KM036 Silao,
Guanajuato, Mexico 36100
E-mail: smp_info@morimatsu-lifesci.com

ASIA PACIFIC

Shanghai Office, China
Suzhou Plant:
No. 2 Xinggang Road, Changshu, Jiangsu, China
Shanghai Plant:
No. 900 Zhongqiang Road, Shanghai, China
E-mail: smp_info@morimatsu-lifesci.com
Tel.: +86 21 38112058

Fujisawa Office, Japan
Effect Building 3F, 86-8 Fujisawa
Fujisawacity Kanagawa, 251-0052 Japan
E-mail: smp_info@morimatsu-lifesci.com
Tel.: +81 466 52 4505


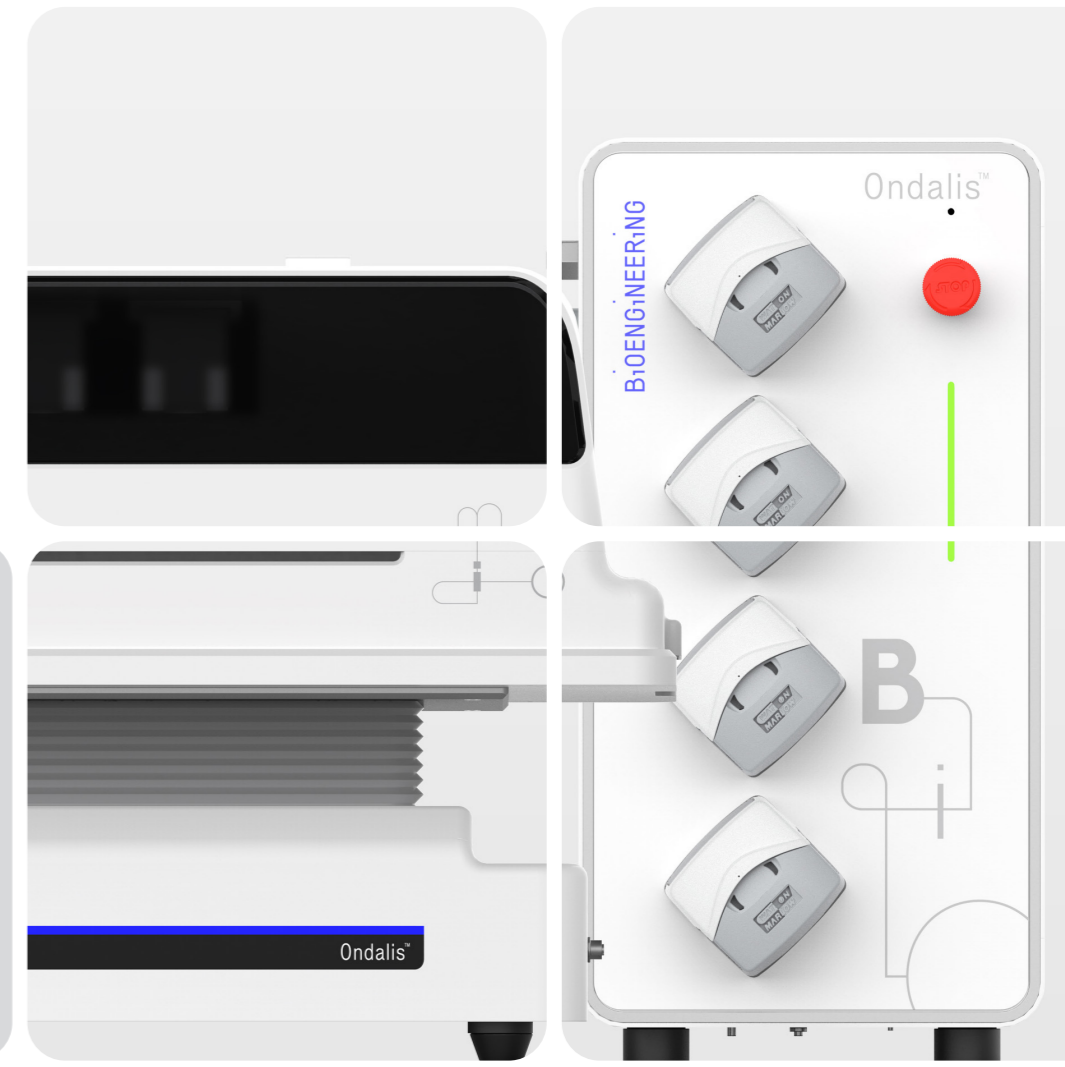
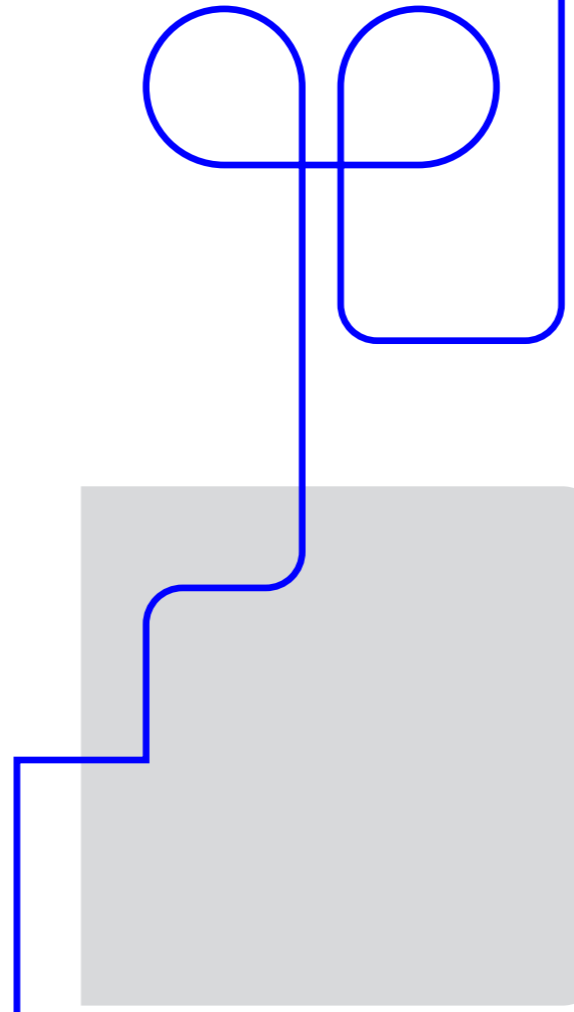
Gifu Office, Japan
1430-8, Minobe, Gifu
501-0413, Japan
E-mail: smp_info@morimatsu-lifesci.com
Tel.: +81 58 323 0333

Singapore Office, Singapore
3 Fusionopolis Place #04-52&53, Galaxis Work Loft
Singapore 138523
E-mail: smp_info@morimatsu-lifesci.com
Tel.: +65 6513 4156

Mumbai Office, India
502/503, Lodha Supremus II, Raad no. 22
Wagle Industrial Estate, Next to New Passport office
Thane (W) - 400 604
E-mail: smp_info@morimatsu-lifesci.com
Tel.: +91 22 4890 4400

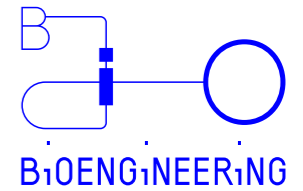
Ondalis

The perfect wave for your cells.



BIOENGINEERING

Bioengineering AG
Sagenrainstrasse 7, 8636 Wald, Switzerland
Tel.: +41 55 256 81 11
E-mail: info@bioengineering.ch
www.bioengineering.ch



The single-use bioreactor for versatile cell processes

Ondalis creates the ideal growth environment: gentle wave motion for sensitive cells with full process control, combined with the reliability of modern single-use culture systems.



Ondalis reactor system for Wave single-use culture bags and control unit for precise process control.

Efficient cultivation with modular Wave technology

Ondalis is a Wave single-use bioreactor system for cell culture processes in research and production. The agitation ensures uniform mixing of the medium and efficient gas transfer while gently cultivating sensitive cell lines. This makes the system particularly suitable for cell cultures with high cell densities and demanding cell types.

Pre-sterilized single-use culture bags enable rapid setup and reduce the risk of cross-contamination. Ondalis supports batch, fed-batch, and perfusion cultures and provides a reliable platform for modern single-use bioprocesses under GMP-compliant conditions.

- Quick commissioning
- Low shear forces
- Suitable for a wide range of cell culture processes
- Precise monitoring and control of all culture parameters
- Integrated Bio-Bag Integrity Test
- GMP-compliant authority management system

Specifications: Culture bag, basic model

	2L	5L	10L	20L	50L
Working capacity	0.2-1L	0.5-2.5L	1-5L	2-10L	5-35L
With pH/DO	•	•	•	•	•
With perfusion film	•	•	•	•	•

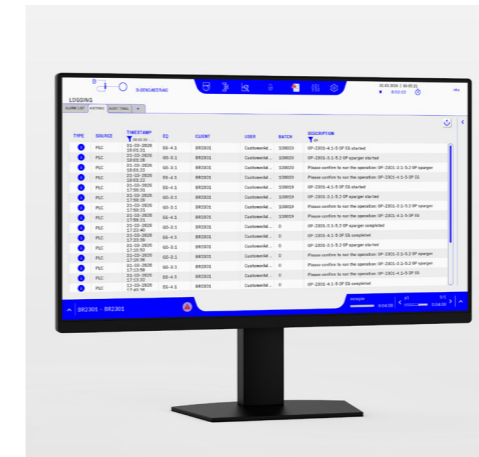
These multi-layered, highly stable, gamma-sterilized, and tested-to-all-standard-specifications single-use culture bags are suitable for cell therapy, vaccine production, and other demanding biotechnological applications.

They are easy and safe to handle and support batch, fed-batch, and perfusion cultures to ensure reliable cell proliferation up to high cell densities.



BioScada II – Intuitive SCADA for controlling bioprocesses

BioScada II visualizes and analyzes your bioprocess in real time. Freely configurable widgets display critical process parameters, trends and system states exactly where they are needed. Integrated analysis tools enable fast comparison of batches and support data-driven process optimization.



- Freely configurable widgets for process visualization
- Integrated analyzer with batch-to-batch trend comparison
- Setpoint Selector for intuitive cascade control configuration
- Flexible setpoint profiles (e.g. exponential feed strategies)
- Integrated sequencer for custom process workflows
- Remote Service Provider for secure system monitoring and support

Technical Specifications

- Working volumes: from 0.2 L to 35 L (bag sizes 2 L to 50 L)
- Swivel speed: Precisely adjustable from 2 to 40 rpm
- Swivel angle: Adjustable from 2° to 12°
- Temperature control: From room temperature to 40 °C (precision ± 0.2 °C)
- Gas supply: Integrated flow control from 0 to 1000 ml/min
- CO₂ measurement: 0 % to 15 % (accuracy ± 0.3 %)
- pH control: 6.0 to 8.0 (accuracy ± 0.1 pH)
- DO (dissolved oxygen) control: 0 % to 100 % (accuracy ± 3 %)
- Weight measurement: Integrated load cells with 1 g accuracy
- Safety: Integrated pressure monitoring

Regulatory Compliance

BioScada II supports operation in regulated bioprocess environments and enables compliant data handling and documentation.

- GAMP 5 compliant development
- 21 CFR Part 11 compliant electronic records and audit trails
- Role-based user management
- Audit trail and event logging
- Electronic signature support